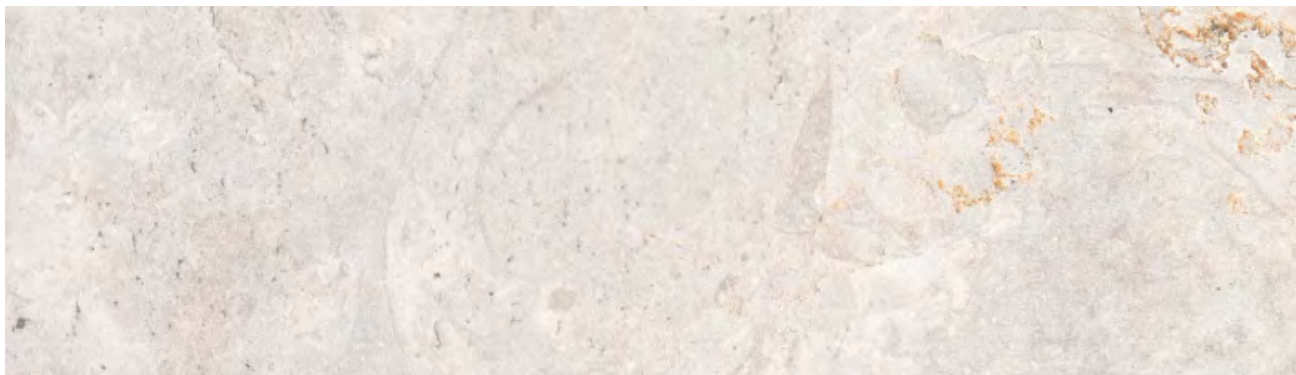
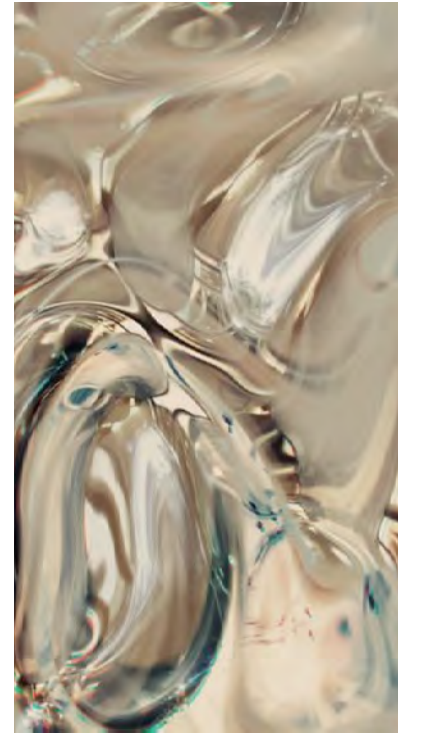

Baccarat

X

THE NEW YORK SCHOOL
OF INTERIOR DESIGN
SCHOLARSHIP COMPETITION

MOOD

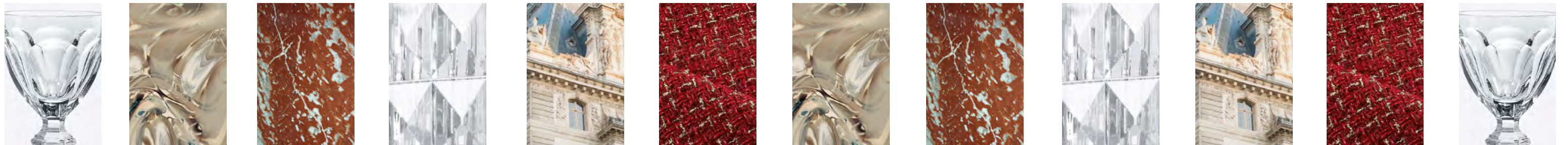


CONCEPT

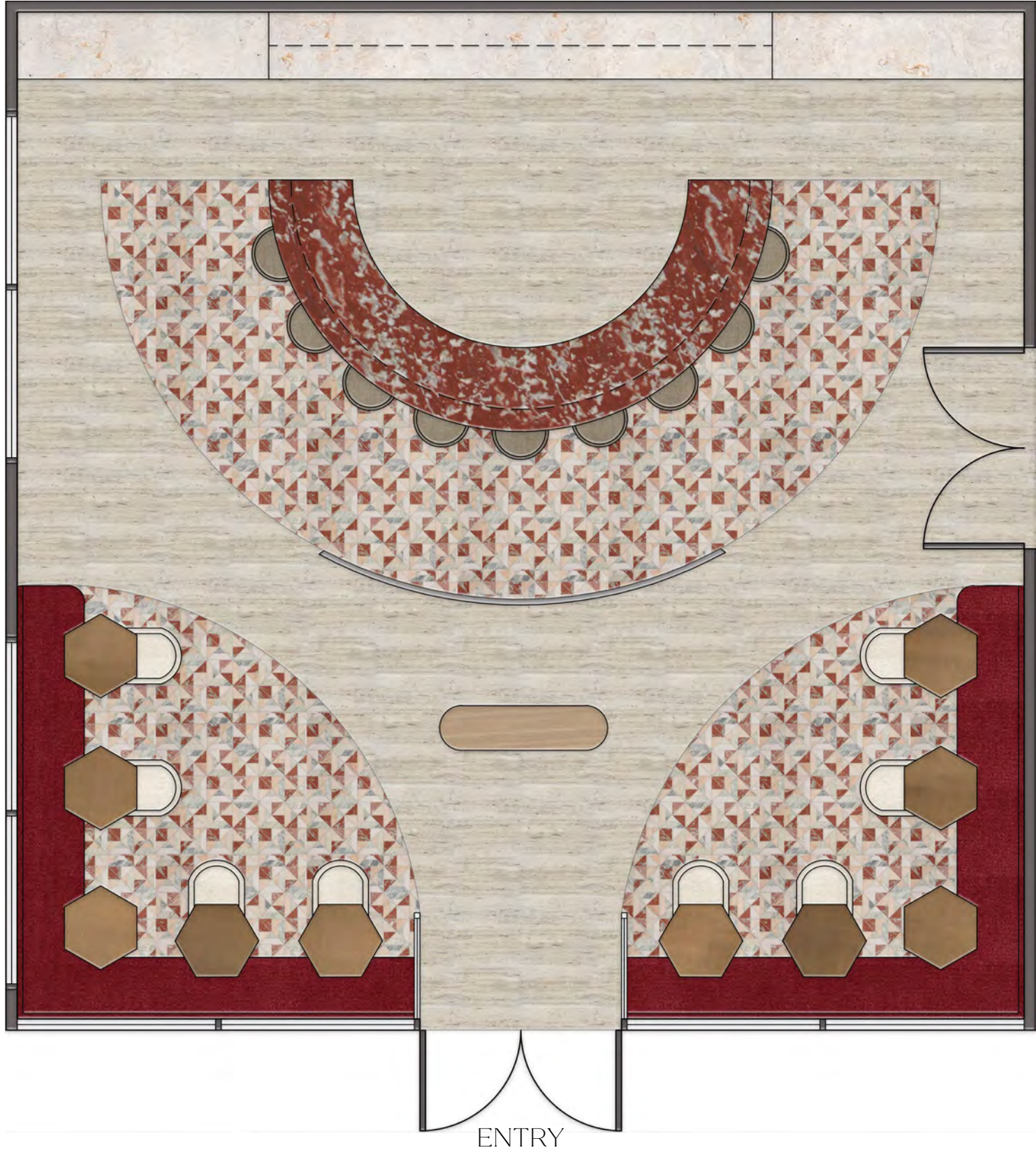
The deeply rich history of Baccarat was founded with a sense of hope and light from its early beginnings in 1764. Providing a new and innovative type of work for the people of the small village in France, Baccarat remained strong during moments of drastic uncertainty and conflicts while continuing to flourish to greater lengths as time progressed onto a global scale. Today, Baccarat is known for their exceptional crystal and glass objects, use of colored glass crafted by unmatched techniques, but most importantly, their commitment and care for their superb artisans and craftspeople.

The 1841 bar and lounge, a reference to the ever-prominent design commissioned by Emperor Napoleon III of France, pays homage to the house of Baccarat as well as their artisan's ability to craft timeless pieces for over a century. Ideally located adjacent to a Baccarat hotel or restaurant, 1841 exudes a level of transparency and brilliance by being framed in glass with crystal throughout. The interior environment and light itself, both natural and artificial, intertwine with one another as natural light floods into the space throughout the day and fades into a sparkle as night falls. The use of glass on both vertical and horizontal planes of the structure itself allow the space to glow and catch the eye of a passerby simply curious and captivated as to what is beyond the luminescence. The incorporation of Baccarat's symbolic red crystal is found throughout in color and object, while gold and crystal components, are emphasized in a similar tone.

The profound origins and continued successes of Baccarat are not only represented and celebrated amongst the interior environment of the 1841, but rather it is a place to gather, to celebrate with friends and loved ones alike, and to feel the rays of light that dance around each facet of crystal and glass.



FLOOR PLAN



TO HOTEL OR RESTAURANT



THE 1841 FLOORPLAN

SCALE: 1/4" = 1'-0"

ELEVATIONS



NORTH ELEVATION

SCALE: 1/4" = 1'-0"



SOUTH ELEVATION

SCALE: 1/4" = 1'-0"

RENDERING



RENDERING



RENDERING



BACCARAT PRODUCTS

While several Baccarat objects are both on display and used as decor, and by guests and staff alike, every Baccarat entity incorporated into the space can also be purchased on site. The 1841 allows for visitors and guests to actually use Baccarat pieces and better understand how they can be incorporated into their own every day lives as well as envision them within their own setting.

The three objects highlighted below are prominent moments within this setting however certainly not the only products incorporated into the space.



The Torch Ceiling Lamp creates an intimate glow when positioned above each bistro table within the lounge space. It harmoniously accentuates the central chandelier and provides additional illumination throughout the interior.

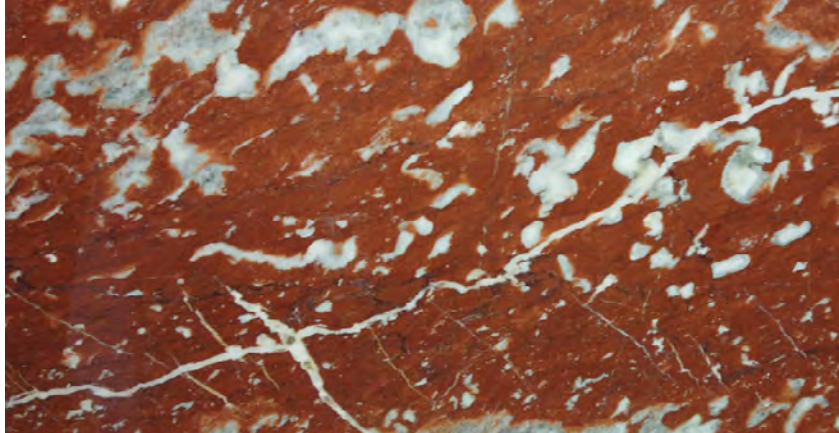


Le Roi Soleil Chandelier (40L) is an outstanding centerpiece for the 1841 bar and lounge space. Light radiates from all angles outwards and creates an elegant focal point of discussion for everyone who views its vibrant beauty. The combination of contemporary forms and classical elements showcase both Baccarat's timelessness and innovation.



The iconic Harcourt 1841 glass is an outstanding and prominent piece that is true inspiration for the bar/lounge. It exemplifies Baccarat's power and elegance over the course of history and remains one of the most sought after pieces. The beveled and curved elements as well as the hexagonal foot are transposed throughout the interior.

MATERIALS



ROUGE LANGUEDOC

Incorporating this marble throughout not only emphasizes the red hues used by Baccarat over the course of history, but it also celebrates France and pays homage to the origins of the brand as this marble is native to the country Baccarat was founded in,



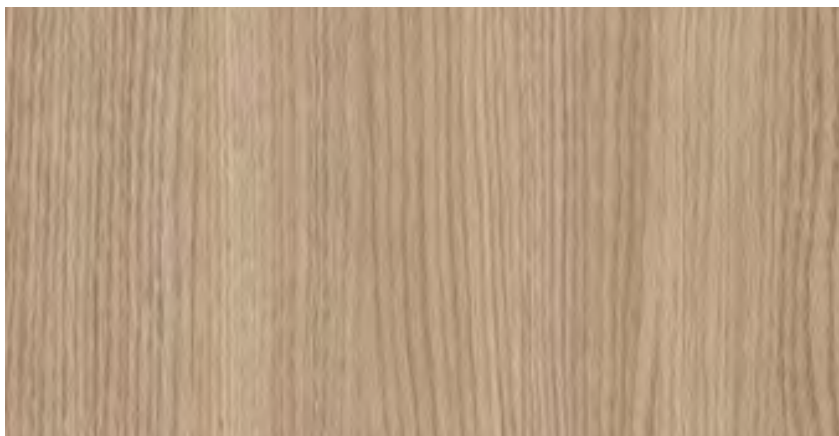
LIMESTONE

Limestone, specifically Lutetian limestone, is also a material derived from France. By using this in the interior space, a further connection and celebration to Baccarat's past is created.



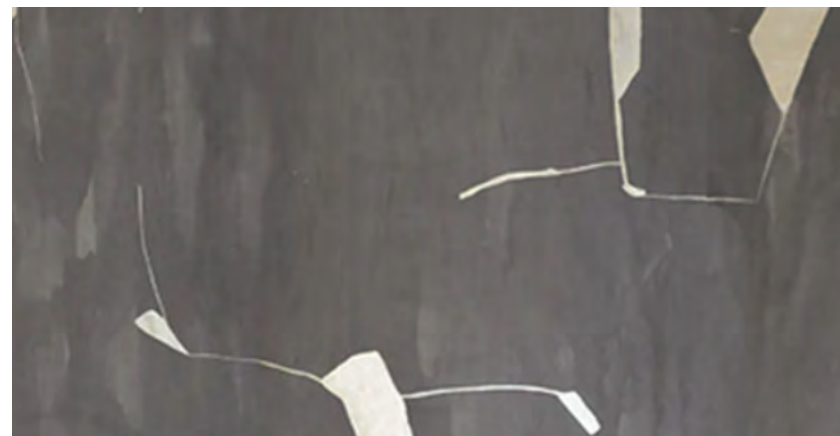
MOSAIC TILE

The geometric forms of the mosaic tile used to delineate spaces within the interior setting, are closely linked to the shapes and composition of several Baccarat products such as the Louxor vase and Eye vase among others.



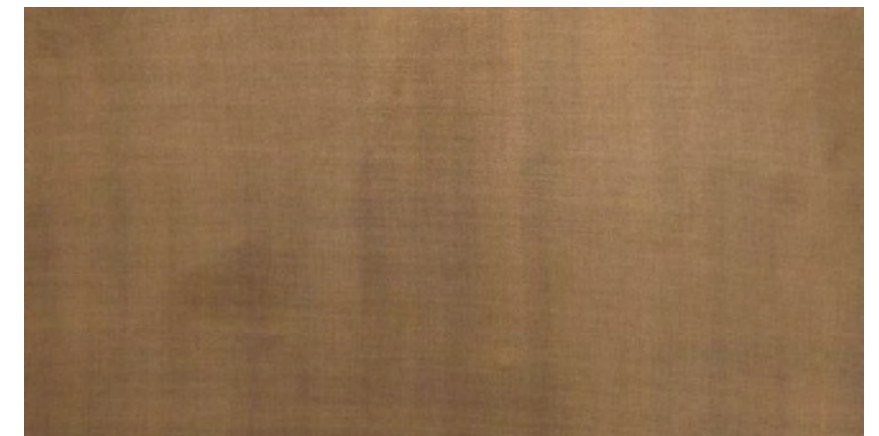
WHITE OAK

With France accounting for roughly 40% of Europe's total area of oak trees, this species is exceptionally fitting to use for built-in cabinetry, and other furniture pieces throughout. The warm tones, natural to this species of wood, create an inviting sentiment when used within an interior setting.



HAND-PAINTED WALL COVERING

This particular hand-painted wall covering by Porter Teleo not only incorporates a contemporary element into the space, but it also celebrates and pays homage to the gifted artisans and craftspeople that create meticulous work in their field each and every day just as the artisans of Baccarat do.



BRUSHED BRASS

By utilizing a metal within the space, the lighting, both natural and artificial, dances across this surface and reflects light in a dazzling way. The warmth of this particular metallic material emphasizes the ideas of a welcoming space to spend time within.